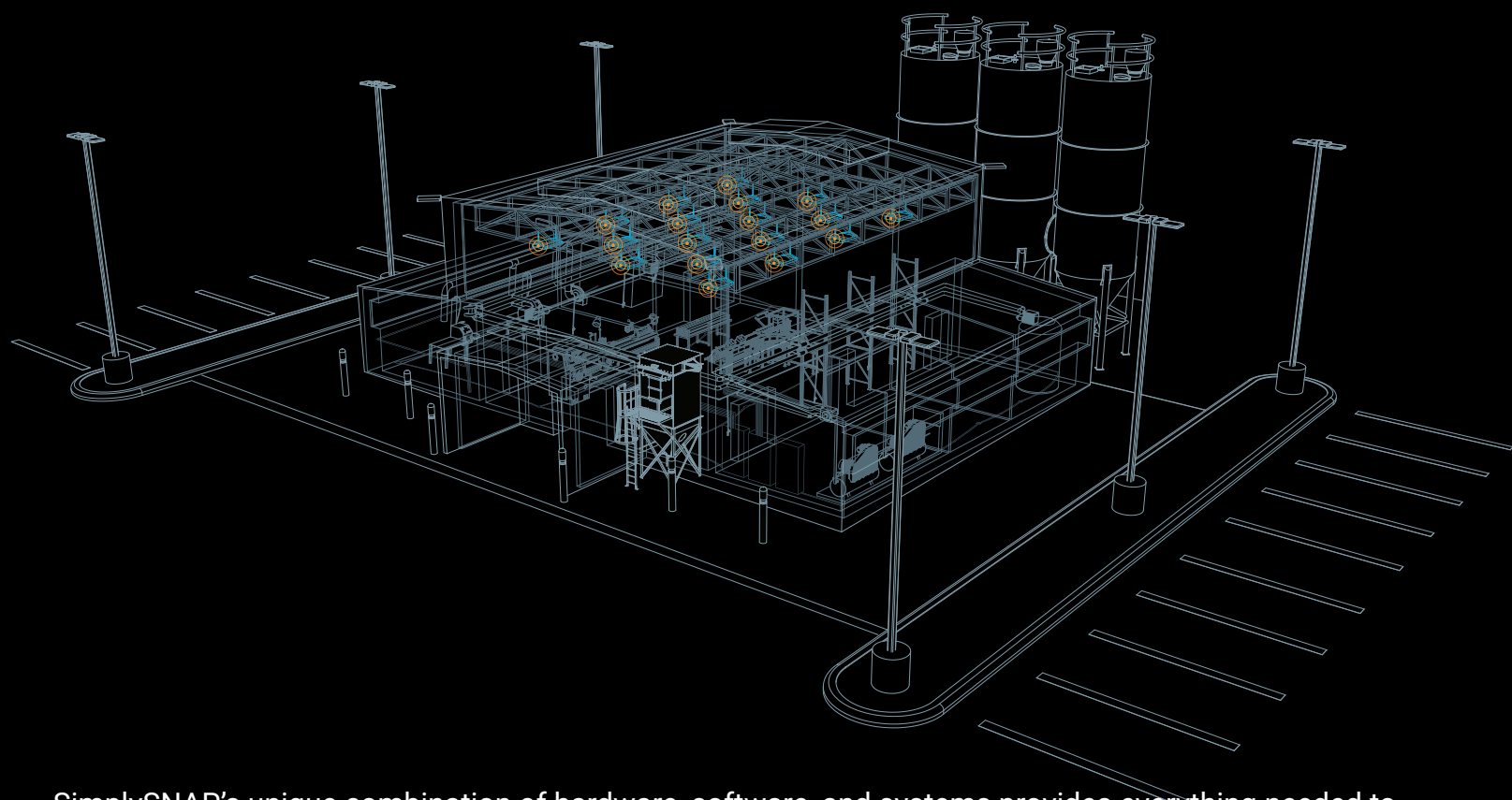


### Features

- Individual device control (On, Off, DIM)
- Groups of devices (Zones) can be controlled together
- Control can be scheduled based on a calendar (Scenes)
- Sensors and Photocells supported
- DALI 2.0 supported

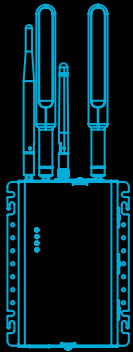
### Benefits

- Accelerates the Simple Payback and ROI
- Optimizes the Light Quality to enhance all work environments
- Reduces Peak Demand
- Increases Savings to Investment Ratio



SimplySNAP's unique combination of hardware, software, and systems provides everything needed to upgrade your factory to the 21st century. We provide the networking infrastructure through smart lighting or a dedicated mesh network as well as the components needed to outfit your facility with sensors and the software to monitor them. Power submetering and compressed air submetering are just a start to the Industrial IoT applications you can implement to provide insight into your factory operations allowing you to make data-driven decisions in your manufacturing processes.

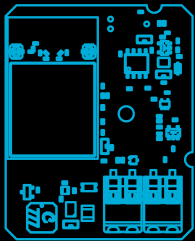
# System Components



## SS450 Site Controller

**SS450-002**

WiFi and Verizon 4G LTE enabled,  
wall mount bracket; 4 Antennas



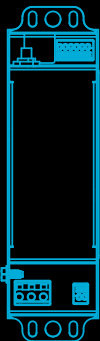
## DIM10-087 Embedded Controller

**DIM10-087-00**

Wireless Lighting Controller, external antenna required

**DIM10-087-00-F**

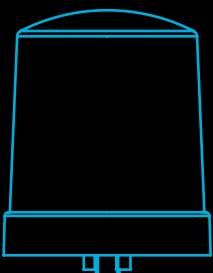
Wireless Lighting Controller, internal antenna



## DIM10-250 Bolt-On Controller

**DIM10-250-11**

Wireless Lighting Controller with  
Power Monitoring and Sensor Inputs



## TL-7 Twist-Lock Controller

**TL7-B2**

Low Voltage Twist-lock Wireless  
Lighting Control with Built in Photocell