

SimplySNAP On-Site Controller



**SimplySNAP Lighting
On-Site Controller —
No Internet Required**



| Specification Data | |
|--------------------|--|
| Job Name | |
| Type | |
| Catalog # | |
| Comments | |

Product Overview

The **SS450** site controller serves as the heart of your lighting solution, allowing local control without the internet using the Synapse SimplySNAP solution.

SimplySNAP is a wireless, on-site control solution for monitoring and controlling outdoor and indoor lights via a SNAP mesh network. SimplySNAP provides the flexibility to manage your lighting, your way, with system setup and configuration through a mobile-friendly Wi-Fi interface.

The system stores power data, zones, alarms, behaviors, and critical events locally for maintenance and troubleshooting; and provides municipal compliance via daily schedules, sensor controlled behaviors, and multiple dimming levels. With programmable schedules and easy setup, SimplySNAP is the perfect solution for remote sites or where internet is not desired.

You just configure it and it runs.

Features

- No Internet Required
- Multiple Zones, Behaviors, Events, and Schedules
- SimplySNAP creates a Wi-Fi connection to smart phone, tablet, or PC
- Optional SimplySNAP Remote Access (SSRA) service available
- Sunrise and Sunset Schedules driven by latitude and longitude
- Energy saving features including Daylight Harvesting and Demand Response

| Product # | Description |
|-----------|---|
| SS450-002 | WiFi and Verizon 4G LTE enabled, wall mount bracket; 4 Antennas |

| | |
|-------------------------------|---|
| Dimensions | 6.8" L x 4.6" W x 1.4" H (173mm L x 117mm W x 36mm H) without antennas |
| Operating Environment* | -40°C to +70°C Indoor Use Only |
| Mounting | DIN rail or Wall Mounted |
| Input Power* | 12-24VDC (via Barrel Connector or Terminal Block Connector) Includes 100-240VAC, 15W AC adapter |
| Cellular | Verizon 4G LTE |
| Wi-Fi | 802.11 b/g/n |
| Radio | SNAP 2.4 GHz; 802.15.4 +20 dBm Transmit Power -105 dBm Receive Sensitivity |
| Certifications | FCC, IC, cULus |
| Warranty | 5 Years |

*Included AC/DC supply is rated for indoor use only (0- 40°C). For outdoor use we recommend the Synapse Central Base Station - model CBSSW-450-002.

To learn more, call or visit:
synapsewireless.com
 (877) 982-7888

Included with the SS450:

- 4 Antennas
- 1 Power Supply
- Mounting Template
- Terminal Block Connector
(for alternate power connection)
- Quick Install Guide

Outdoor On-Site Controller option:

| Part # | Description |
|---------------|---|
| CBSSW-450-002 | Central Base Station SS450-based Model with 5-button switch and NEMA 4X enclosure |

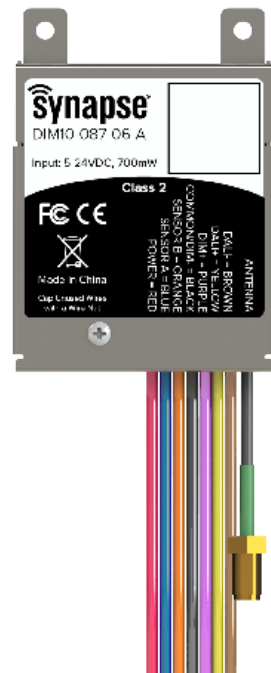
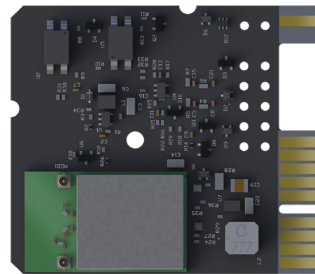
Supported Wireless Controllers:

| Part # | Description |
|--------------|---|
| DIM10-087-06 | DC Power Light Controller |
| DIM10-087-6A | DC Power Light Controller in metal case |
| DIM10-250-11 | 120-277V, Power Monitoring, 5 Amp Relay, Cased, Sensor Input, Sensor Power Supply |
| TL7-xx | Twist-lock Wireless Lighting Controllers with built-in Photocell |

Twist Lock Controllers TL7-xx



Embedded Controllers DIM10-087-06/06-A



Bolt-on Controllers DIM10-250-11

