



# Outdoor Antenna

## For Large Outdoor Installations

Specification Data	
Job Name	
Type	
Catalog #	
Comments	

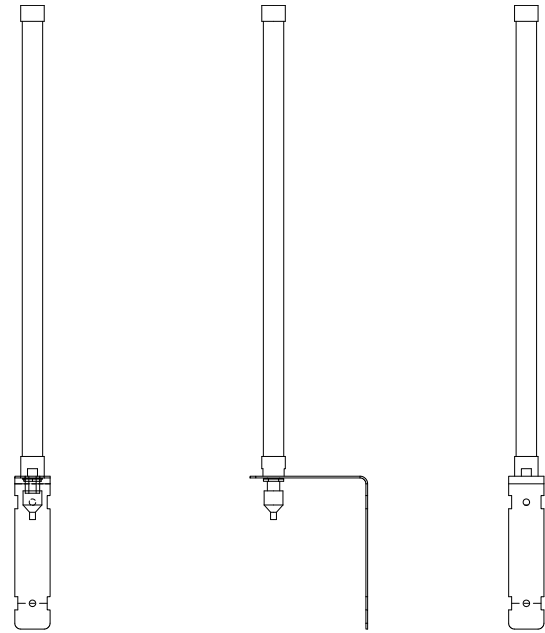
### Product Overview

When installing a SimplySNAP gateway, it is essential to consider how the RF signal will connect to other devices in the SNAP mesh network. The Outdoor Antenna Kit helps ensure that the SimplySNAP gateway signal is amplified and propagated to other devices. This is important on large sites or sites with large physical obstructions between the SimplySNAP gateway and lighting controllers.

The antenna can be bought by itself (a male-to-male RPSMA cable will still be needed), or as part of the outdoor antenna kit that comes with a 20, 30, or 50 foot cable option.

### Kit Includes:

- Remote site-controller SNAP antenna, outdoor, straight with built in mounting bracket
  - » Pulse RO2048NM 8dBi Gain
  - » Radome Omnidirectional CoLinear Antenna
  - » FCC Certified with Module in SS420/450
  - » UV Protection/IP-67 Protection
  - » 85C/185F
  - » Antenna Mast is 20"
  - » Bracket is 6.5" H x 5" L x 1.5" W (165.1 x 127 x 38.1 mm)
  - » Structural Loading to withstand 150 mph winds
  - » VSWR of 2:1
- 20, 30, or 50 foot cable options, RF Low Loss Cable, Male to Male RPSMA
- RP-SMA Female-to-Female Connector
- 50 Ohm Terminator
- Install Guide



### Increase Range of SimplySNAP Gateway

Order #	Description
KIT-ANT420SM	Outdoor Antenna Kit with 20 foot cable
KIT-ANT360	Outdoor Antenna Kit with 30 foot cable
KIT-ANT600	Outdoor Antenna Kit with 50 foot cable
ANT-OSC-8.0-1	Remote site-controller SNAP antenna, outdoor, straight 8.0 dBi gain

**Warranty\*** 5 Years

\*See [www.synapsewireless.com/warranty](http://www.synapsewireless.com/warranty) for warranty terms

To learn more, call or visit:  
[synapsewireless.com](http://synapsewireless.com)  
 or call (877) 982-7888